

## Home Learning Plan

Week beginning: Monday 6<sup>th</sup> July

Class: 4

### Literacy

#### Reading

Start your day by reading on your own for 10 minutes.

#### Handwriting

This week we are revising 2A sentences. These sentences have two adjectives before the first noun and also two adjectives before the second noun. The adjectives provide more information about the nouns and are fantastic at helping us to produce more descriptive writing.

M

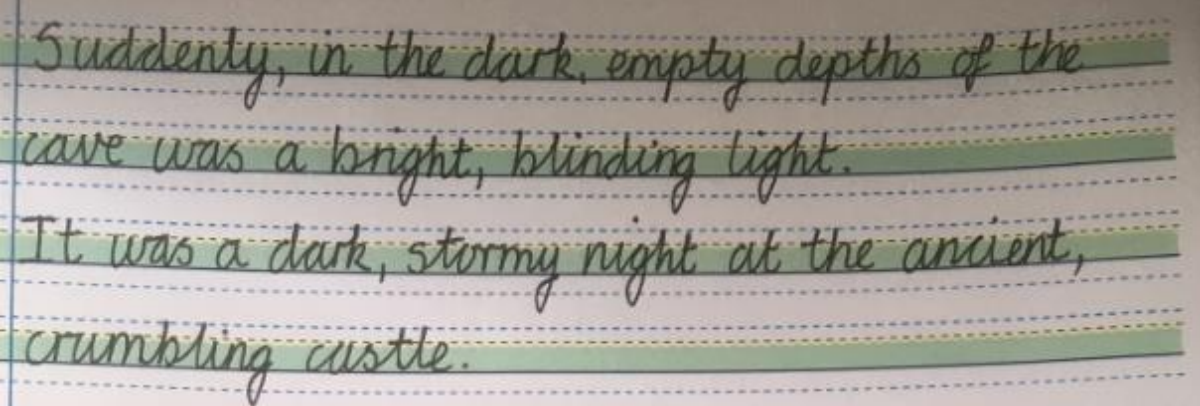
He was a tall, awkward man with an old, crumpled jacket.  
It was an overgrown, messy garden with a lifeless, leafless tree.

Tu

It was an old, creepy house with an overgrown, unkempt garden.  
The man wore an oversized, dirty raincoat with a multi-coloured, droopy flower in the pocket.

W

The glamorous, intelligent princess kissed the grotesque, warty frog.  
It is a pleasant, wild garden with lots of attractive colourful flowers.

Spelling	Th			
	F	Write 2 of your own sentences.		
		For the rest of this term our focus is on revising some of the spelling patterns which you have covered throughout Year 4. <ol style="list-style-type: none"> <li>1. Look, say, cover, write, check all the words.</li> <li>2. Choose 4 words and write a sentence for each one.</li> <li>3. Spelling Fame</li> </ol>		
	M	Suffix -ship	membership partnership ownership championship craftsmanship	Spelling Frame custom list # <b>44049</b>  <a href="https://spellingframe.co.uk/guest/word-list/4049">https://spellingframe.co.uk/guest/word-list/4049</a>
	Tu	Words from French -ch	chef chalet machine brochure charade crochet parachute champagne	Spelling Frame Year 3&4 <b>Spelling Rule number 16</b>  <a href="https://spellingframe.co.uk/spelling-rule/19/16-Words-with-the-sound-spelt-ch-(mostly-French-in-origin)">https://spellingframe.co.uk/spelling-rule/19/16-Words-with-the-sound-spelt-ch-(mostly-French-in-origin)</a>
	W	Words from French -gue, -que	league tongue antique unique plague dialogue rogue vague catalogue monologue	Spelling Frame Year 3&4 <b>Spelling Rule number 17</b>  <a href="https://spellingframe.co.uk/spelling-rule/20/17-Words-ending-with-the-g-sound-spelt%E2%80%93gue-and-the-k-sound-spelt-%E2%80%93que-(French-in-origin)">https://spellingframe.co.uk/spelling-rule/20/17-Words-ending-with-the-g-sound-spelt%E2%80%93gue-and-the-k-sound-spelt-%E2%80%93que-(French-in-origin)</a>

	<b>Th</b>	-ly ending	sadly usually completely finally comically happily angrily gently simply humbly nobly basically dramatically	Spelling Frame Year 3&4 <b>Spelling Rule number 8</b>  <a href="https://spellingframe.co.uk/spelling-rule/13/8-The-suffix-ly">https://spellingframe.co.uk/spelling-rule/13/8-The-suffix-ly</a>
	<b>F</b>	Prefixes re, sub, mis	redo refresh return reappear redecorate subdivide subheading submarine submerge misbehave mislead misspell	Spelling Frame Year 3&4 <b>Spelling Rule number 8</b>  <a href="https://spellingframe.co.uk/spelling-rule/59/6-More-prefixes-3-of-3">https://spellingframe.co.uk/spelling-rule/59/6-More-prefixes-3-of-3</a>

**Have a look at this picture advertising a TV show and think about these 4 questions:**



1. What can you see?
2. What do you think this TV show will be about?
3. Predict – Do you think you will like this TV show? Why?
4. What questions do you have about this TV show?

**Watch this trailer for the same TV show and write the answers to the comprehension questions.**

<https://www.youtube.com/watch?v=38JDGnr0vA&t=63s>

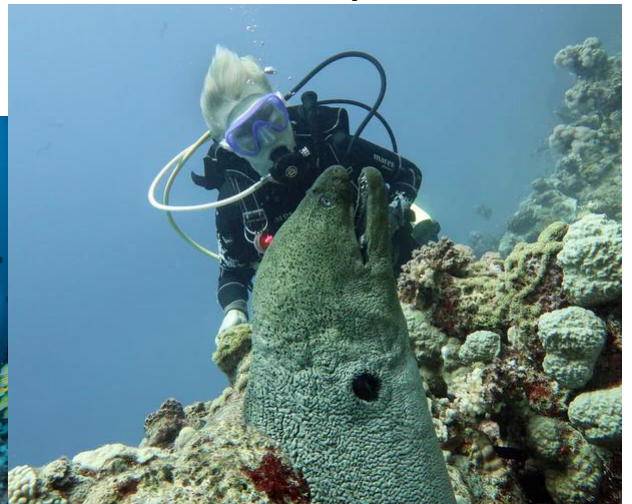
1. What is the largest habitat on Earth?
2. What do you think the word 'habitat' means?
3. Pause at 35 seconds. Sir David Attenborough advises you to, "take a deep breath." What does this suggest about what you are about to see?
4. What allows the TV show to, "voyage further than ever before"?
5. Why do you think an ability to 'go deeper' was so important when making this TV show?
6. The shores of the coastline are described as "restless" can you explain what this means?
7. What do the dolphins do in order to trick their prey?
8. Why do you think Sir David Attenborough has chosen to describe the creatures of the under-sea forests as fairy-tale?
9. The coral reefs are described as 'cities.' What does the use of this word as an adjective tell you?
10. Sir David Attenborough claims that, "some of the Earth's best kept secrets hide at uncharted depths." What do you think the word 'uncharted' means?
11. Choose one word to describe the ocean after watching this clip. Explain your choice.

**EXTRA CHALLENGE:** Summarise this clip in a tweet (280 characters). Don't forget to include an appropriate hashtag.



**Tu**

**Choose one of these pictures and answer the questions:**



- Give it a title
- How does this image make you feel?
- What do you think the divers are looking at?
- Where do you think the sea creatures are going?
- What colours can you see?
- Older children: list synonyms for each of your colours. This colour thesaurus in Year 4 General Resources will help you.
- Write what happens in the next 5 minutes.

[illegible]

W

This is a written task for Wednesday and Thursday.  
You might like to watch the scuba diving clip to give you inspiration  
to finish the diary entries.

<https://safeyoutube.net/w/B2w6>

Use as much description as you can to make your writing exciting  
and remember to use your words to 'show not tell'. Older children  
will be able to write a couple of paragraphs for each one, younger  
children will write a few of sentences.

## My Under the Sea Diary

### Monday

On Monday after swimming in the warm sea, a school of  
dolphins playfully came and swam with me. We swam...

---

---



### Tuesday

Today I was swimming around the coral with angel fish  
when all of a sudden I saw a large fearsome shape. It  
was a shark. I was terrified but I... \_\_\_\_\_

---

---

### Wednesday

On Wednesday afternoon I swam all the way down to  
the bottom of the ocean floor. In the murky distance I  
saw what looked like an old sunken ship. I went close to  
investigate and... \_\_\_\_\_

---

---



### Thursday

On Thursday I felt adventurous and swam off in a  
different direction. Just behind a cluster of rocks I saw  
what looked like an old chest. \_\_\_\_\_

---

---



Th

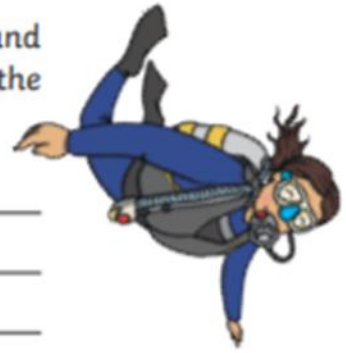
### Friday

Friday was a very tense day! I'd lost track of time and forgot to check the air supply in my tank. I checked the air gauge. It was empty. I panicked and...

---

---

---



### Saturday

Saturday was almost a disaster! After going back to where I found the treasure a few days ago, I tried to swim back up to my boat, but it wasn't there!



---

---

---

### Sunday

Today I began by following the anchor of the chain to the ocean floor. When I reached the bottom I found a creature that I'd never seen before. A new species! You should have seen it, \_\_\_\_\_

---

---

---



F



**Watch this song and write the answers to the comprehension questions.**

<https://www.youtube.com/watch?v=cPAbx5kgCJo>

### **How Far I'll Go**

Auli'i Cravalho

*I've been staring at the edge of the water  
'Long as I can remember, never really knowing why  
I wish I could be the perfect daughter  
But I come back to the water, no matter how hard I try  
Every turn I take, every trail I track  
Every path I make, every road leads back  
To the place I know, where I can not go, where I long to be*

*See the line where the sky meets the sea? It calls me  
And no one knows, how far it goes  
If the wind in my sail on the sea stays behind me  
One day I'll know, if I go there's just no telling how far I'll go*


*I know everybody on this island, seems so happy on this island  
Everything is by design  
I know everybody on this island has a role on this island  
So maybe I can roll with mine  
I can lead with pride, I can make us strong  
I'll be satisfied if I play along  
But the voice inside sings a different song  
What is wrong with me?*

*See the light as it shines on the sea?  
It's blinding  
But no one knows how deep it goes  
And it seems like it's calling out to me  
So come find me  
And let me know  
What's beyond that line?  
Will I cross that line?*


- 1) What has the girl been staring at?
- 2) How long has she been staring?
- 3) What does the girl wish she could be?
- 4) What does the girl's wish tell you about how she might see herself? Explain fully.
- 5) Why do you think the girl cannot go to the place she 'longs to be'?
- 6) What calls to the girl?
- 7) What emotion is used to describe how everybody on the island seems?
- 8) What does everybody on the island have?
- 9) The girl suggests 'I'll be satisfied if I play along.' Do you think she would be? Explain fully.
  - Yes
  - No
  - Maybe
- 10) What do you think the phrase 'play along' means?
- 11) Can you think of 2 synonyms for 'blinding,' the word used to describe the light as it shines on the sea?
- 12) Do you think that the girl will one day cross the line where the sky meets the sea? Explain your answer fully.
- 13) Order these events from 1 – 5. One has been done for you.
  - A blinding light shines on the sea. —
  - The girl is staring at the edge of the water. —
  - Everyone on the island seems happy. 3
  - The girl wishes she could be the perfect daughter. —
  - The voice inside the girl sings a different song. —



## Maths

Muscle Maths	Do one of your muscle maths cards.		
Tables	<p>Play <b>Bunny Battlefront</b> to test yourself on your times tables and then go in to battle! Good luck!</p> <div></div> <p><a href="https://www.ictgames.com/mobilePage/bunny/index.html">https://www.ictgames.com/mobilePage/bunny/index.html</a></p>		
Maths Task		<p><a href="https://whiterosemaths.com/homelearning/year-4/">https://whiterosemaths.com/homelearning/year-4/</a> or <a href="https://www.bbc.co.uk/bitesize/tags/z63tt39/year-4-and-p5-lessons">https://www.bbc.co.uk/bitesize/tags/z63tt39/year-4-and-p5-lessons</a></p> <ul style="list-style-type: none"><li>✓ watch the video and do the activity</li><li>✓ <u>you can</u> do the pages in PowerMaths to practice some more</li><li>✓ <u>you might</u> do the Extra Challenge</li></ul>	
	M	Identify angles	Power Maths 4C pages 93-95
	Tu	Compare and order angles	Power Maths 4C pages 96-98
	W	Triangles	Power Maths 4C pages 102-104
	Th	Quadrilaterals	Power Maths 4C pages 105-107
	F	Reasoning and Problem Solving with triangles	(pdf on home learning page) Everyone should try the first 2 pages and if you are feeling confident then also do the 3 <sup>rd</sup> page.
Extra Challenges to try	<p>Do today's <b>Problem of the Day</b> from White Rose: <a href="https://whiterosemaths.com/resources/classroom-resources/problems/">https://whiterosemaths.com/resources/classroom-resources/problems/</a></p> <p>Choose a <b>Maths at Home Challenge</b> from NRich: <a href="https://nrich.maths.org/14559">https://nrich.maths.org/14559</a></p> <p>Do today's Maths Master Question</p>		

## JULY MATHS MASTERS

Monday	Tuesday	Wednesday	Thursday	Friday	Saturday	Sunday
<b>Have fun doing a Maths question a day!</b>		1 One quarter of a number is 15, what was the original number?	2 How many faces does a triangular prism have? Can you accurately draw one?	3 What is 12,376 rounded to the nearest 10? Nearest 100?	4 $49 + 46 = 815$ . Is this right? Why?	5 What is half of 90? How does this help find half of 900?
6 What are the factors of 36?	7 Is $3 \times 12$ the same as $6 \times 6$ ? How do you know?	8 What is today's date in Roman Numerals?	9 What is $2.7 + 1.1$ ? How did you work it out?	10 What is double 42? So what is double 4200?	11 What do you call an 7-sided shape? Can you draw one?	12 How many ways can you make £1.13?
13 How many months have 31 days? Which months are there?	14 Write these numbers in words: 11,542 1,761	15 List all the multiples of 7 between 30 and 70.	16 How many lines of symmetry does a regular octagon have?	17 What's bigger: $120 - 45$ or $110 - 45$ ? How do you know?	18 If I have £10 and I spent £5.43 and then £1.78, how much change do I have?	19 What is three quarters of 60? Can you draw it to help?
20 Describe how to find the missing number in this calculation: $\square \times 7 = 770$	21 What is the area of a rectangle that measures 3m by 7m?	22 What's longer – 34m or 340cm? How do you know?	23 What numbers can you make with the digits 5, 4, 1, 8?	24 What number is missing in the sequence? How do you know? 30, 60, __, 120.	25 Put these numbers in descending order: 789, 978, 987, 798, 879.	26 What time does this clock say? 
27 What is $41 + 64$ ? What other sums can you write which give the same answer?	28 What is the total of 67, 34, 19, 70?	29 If s divided by 3 is 12, what is the value of s? How do you know?	30 Calculate $5 \times 12$ . Write other calculations which give the same product	31 <b>TRICKY QUESTION:</b> How many minutes from 9:15am to 3:15pm?	<b>Challenge yourself to talk to the people at home and show off what you know!</b>	

## Power Maths Answers

### Unit 15: Geometry – angles and 2D shapes

#### Lesson 1: Identifying angles

→ pages 93–95

- a) Ticked: 3rd and 5th angle  
b) Ticked: 4th and 5th angles  
c) Ticked: 2nd angle
- Size and orientation of angles will vary but must be a right angle, an acute angle and an obtuse angle.
- The trapezium (top right corner) is in the wrong place since it has 2 acute angles and 2 obtuse angles so belongs in the top left cell in the diagram.
- Angles a) and d). Angle a) is a right angle and so will fit exactly. Angle d) is acute and so will also fit.
- Tree or pond.

#### Reflect

Descriptions may vary; for example:

An acute angle is an angle that is less than a right angle (or quarter turn).

An obtuse angle is an angle greater than a right angle (or quarter turn) but less than a straight line (or half turn).

A right angle is a quarter turn or  $90^\circ$ .

#### Lesson 2: Comparing and ordering angles

→ pages 96–98

- a) d b c a  
b) b c a d  
c) d b c a
- a) A B D C E  
b) The more sides a regular shape has, the bigger the interior angles.
- Answers will vary, but ensure that angles are in ascending order and ideally include an acute angle, a right angle and an obtuse angle.
- Sometimes true; if the angles are less than  $45^\circ$ , then adding them together will be less than  $90^\circ$  and will thus make an acute angle. However, combining 2 acute angles which are both more than  $45^\circ$  will make an obtuse angle.

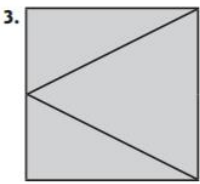
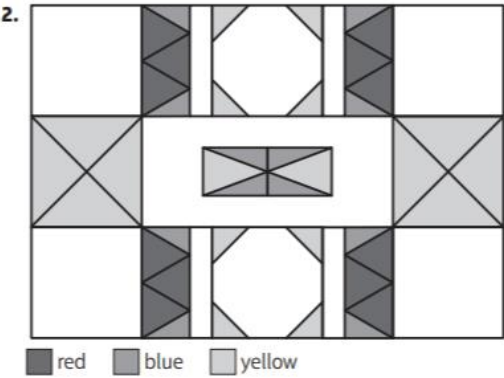
#### Reflect

Acute angles are smaller than a right angle (a quarter turn) and obtuse angles are greater than a right angles (a quarter turn) but smaller than a straight line (half turn).

# Lesson 4: Classifying triangles

→ pages 102–104

- 1. a) Circled: 1st and 3rd triangles  
b) Circled: 2nd triangle  
c) Circled: 1st and 4th triangles



4.

	2 or 3 equal sides	No equal sides
2 or 3 equal angles	A, C	
No equal angles		B, D

5. There are 25 isosceles triangles altogether.

## Reflect

An equilateral triangle has sides of equal length and all angles of equal size (60°). An isosceles triangle has 2 sides the same length and 2 angles equal in size. A scalene triangle has all sides different lengths and all angles different sizes. A right-angled triangle has 1 angle which is a right angle (90°). Right-angled triangles can be isosceles or scalene.

# Lesson 5: Classifying and comparing quadrilaterals

→ pages 105–107

- 1. a) Circled: rectangle (top left), rhombus (top right), square (bottom left), trapezium (bottom right)  
b) Circled: both squares (bottom left, bottom right)  
c) Circled: all shapes except the square
- 2. Answers will vary but must include 2 squares and 4 non-square quadrilaterals (orientation will vary).
- 3. Shapes matched:  
Trapezium → bottom shape  
Rhombus → 3rd shape from top (a square is a special sort of rhombus)  
Parallelogram → top shape and 3rd shape from top (a square is a special sort of parallelogram)  
Rectangle → 2nd shape from top and 3rd shape from top (a square is a special sort of rectangle)
- 4. Check children have drawn four different parallelograms.

## Reflect

A rhombus has 4 equal sides but can have different sized angles. A square is a type of rhombus but with angles of equal size (right angles or 90°).